



# UltraTress

The ultimate hair extensions for the ultimate you.

# UltraTress

**The ultimate hair extensions for the ultimate you.**

As a brand of Hair Visions International, one of the most established names in the hair industry for over 40 years, UltraTress has been serving the beauty industry since 2003 offering the most desirable hair extensions on the market available today.

## **UltraTress adds beauty and confidence.**

Nothing makes a woman feel more beautiful than her hair. Whether it's length, volume or luster, hair brings out the confidence all women want. That's why UltraTress Hair Extensions use 100% Remi Human Hair to enhance hair's natural beauty.

## **Simple, safe, fast**

UltraTress Hair Extensions deliver the look of natural, fuller hair effortlessly through its multiple application offerings that will surely satisfy even the most discerning client.

## **UltraTress, your options are endless.**

## PRODUCT INDEX

AVAILABLE COLORS .....	7	ULTRA II PLUS .....	2	ULTRATRESS GRAFTS.....	4
COLOR CHART.....	8	ULTRALINKS .....	3	ULTRAWEFTS .....	5
HAIR CARE .....	9	ULTRATINI .....	4	VICTORIA .....	5
OMBRE COLORS.....	6	ULTRATRESS II.....	1		

www.UltraTress.com • 800-327-5555

**FACEBOOK:** @UltraTressExtension • **TWITTER:** @UltraTressExt



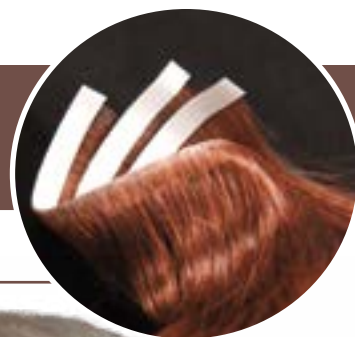
# ULTRATRESS II

100% REMI HUMAN HAIR

## AVAILABLE IN:

18" SILKY STRAIGHT    24" BODY WAVE  
14" BODY WAVE    14" CURLY

18" BODY WAVE  
14" YAKI



SEE PAGE 8 FOR COLOR CHART.

18" BODY WAVE  
OMBRE 4N8YG



18" SILKY STRAIGHT



14" YAKI



14" CURLY



# ULTRA II PLUS

100% REMI HUMAN HAIR

## AVAILABLE IN:

14" STRAIGHT      18" STRAIGHT  
IN EITHER A FOUR OR TWENTY PACK

SEE PAGE 8 FOR COLOR CHART.



14" STRAIGHT



18" STRAIGHT





# ULTRALINKS

100% REMI HUMAN HAIR

## AVAILABLE IN:

18" SILKY STRAIGHT    14" SILKY STRAIGHT  
18" BODY WAVE        18" YAKI

SEE PAGE 8 FOR COLOR CHART.



18" SILKY STRAIGHT  
ALSO IN: 14"



18" BODY WAVE



18" YAKI



# ULTRATRESS GRAFTS

100% REMI HUMAN HAIR

## AVAILABLE IN:

10" STRAIGHT HAIR ONLY  
12 PER PACKAGE

SEE PAGE 8 FOR COLOR CHART.



# ULTRATINI

100% REMI HUMAN HAIR

## AVAILABLE IN:

18" STRAIGHT ONLY  
40 PER PACKAGE

SEE PAGE 8 FOR COLOR CHART.

# ULTRATRESS

announces

# ULTRATINI

Expand your client services with one product.

- Add highlights or lowlights to wigs or hair enhancements
- Undetectable micro-tape extensions
- Great for fill-ins and highlights
- Creates volume for clients with fine, thin hair
- Quick application & removal
- Less stress on fine, thin hair





# VICTORIA

A beautifully designed Top-of-Head Human Hair Extension to add volume and 14" hair length.



## TECHNICAL SPECS:

- Color ring: #86. See page 8 for available colors.
- Lace front for that natural front style. [Victoria may be applied on the very front or cut to smaller size depending on your needs].
- ½" wide PU perimeter and center to cut-a-way to size plus comb clips for quick and easy application.
- 100% Remi human hair, medium density.
- Base size: 3½" x 5¼"
- Finished hair length: 14"

LACE FRONT



## ULTRAWEFTS

100% REMI HUMAN HAIR

### AVAILABLE IN:

66" WIDE WEFTS  
18" SILKY STRAIGHT HAIR

SEE PAGE 8 FOR COLOR CHART.

18" BODY WAVE





# ombré



Ombre' colors only available in UltraTress II 14" and 18" Body Wave



# AVAILABLE COLORS



1



1JB



2NA



3N



3RV



4N



4G



4RG



4RV



5RG



5G



6A



7BRZ



6NG



7V



7G



8YG



9V



PLATINUM

DUAL COLORS ALSO AVAILABLE FOR ULTRATRESS EXTENSIONS



9N



10G



C2/3



C4/5



C3/5



C4/8



C5/7



C6/9



C7/10



C7B/9



C7G/9



C7N/9



C8/7

\*Colors above are representative only. Color chart photos may vary slightly from actual colors. Due to the digitizing process and printing process, the actual color may differ slightly.

# COLOR CHART

DESCRIPTIONS (RING #80)		UltraTress II						Ultra II plus				UltraLinks							
		14" CURLY	14" YAKI	14" BODY WAVE	18" BODY WAVE	18" SILKY STRAIGHT	24" BODY WAVE	ULT2-PL14-4	ULT2-PL14-20	ULT2-PL18-4	ULT2-PL18-20	18" BODY WAVE	14" SILKY STRAIGHT	18" SILKY STRAIGHT	18" YAKI	UltraWeft	UltraTress Grafts	UltraTini	Victoria Top-Of-Head
1	Black	•	•	•	•	•	•		•		•	•	•	•	•	•		•	
1-JB	Jet Black	•	•	•	•	•	•	•	•	•	•					•			
2NA	Dark Natural Ash Brown	•	•	•	•	•	•	•	•	•	•	•	•	•	•	•	•	•	•
3N	Medium Natural Brown	•	•	•	•	•	•	•	•	•	•	•	•	•	•	•	•	•	
4N	Light Natural Brown	•	•	•	•	•	•	•	•	•	•	•	•	•	•	•	•	•	•
4G	Light Golden Brown			•	•	•			•		•	•	•	•					
3RV	Medium Burgundy Brown	•	•	•	•	•		•		•	•	•	•	•	•				•
4RV	Light Mahogany Brown			•	•	•	•		•		•	•	•	•					
4RG	Light Copper Brown			•	•	•	•		•		•	•	•	•				•	
5RG	Lightest Copper Brown	•	•	•	•	•			•		•	•	•	•	•				•
5G	Lightest Golden Brown	•	•	•	•	•		•	•	•	•	•	•	•	•	•	•	•	•
6NG	Dark Natural Golden Blonde			•	•	•	•	•	•	•	•	•	•	•			•	•	•
6A	Dark Ash Blonde			•	•	•	•	•	•	•	•	•	•	•					•
7BRZ	Medium Bronze Blonde	•	•	•	•	•	•	•	•	•	•	•	•	•	•	•			•
7G	Medium Golden Blonde			•	•	•			•		•	•	•	•					
7V	Medium Beige Blonde	•		•	•	•	•		•		•	•	•	•					•
8YG	Light Golden Blonde			•	•	•	•		•		•	•	•	•					•
9V	Very Light Beige Blonde			•	•	•	•	•	•	•	•	•	•	•					•
9N	Very Light Natural Blonde			•	•	•		•	•	•	•	•	•	•			•	•	•
10G	Lightest Golden Blonde	•		•	•	•	•	•	•	•	•	•	•	•		•	•	•	•
C2/3	Dark Natural Ash Brown / Med. Burgandy Brown	•	•	•	•	•			•		•	•	•	•	•	•			
C3/5	Med. Natural Brown / Lightest Golden Brown			•	•	•			•		•	•	•	•					
C4/5	Light Natural Brown / Lightest Copper Brown	•	•	•	•	•	•		•		•	•	•	•	•				
C4/8	Light Golden Brown / Light Golden Blonde			•	•	•	•		•		•	•	•	•					
C5/7	Lightest Golden Brown / Med. Bronze Blonde	•	•	•	•	•	•		•		•	•	•	•	•	•			•
C6/9	Dark Natural Golden Blonde / Very Light Golden Blonde			•	•	•	•		•		•	•	•	•		•	•		
C7B/9	Medium Bronze Blonde / Very Light Beige Blonde			•	•	•			•		•	•	•	•					
C7G/9	Med. Golden Blonde / Very Light Natural Blonde	•		•	•	•	•		•		•	•	•	•		•			•
C7N/9	Med. Natural Blonde / Very Light Beige Blonde			•	•	•			•		•	•	•	•		•	•		•
C7/10	Med. Beige Blonde / Lightest Golden Blonde	•		•	•	•			•		•	•	•	•		•	•		•
C8/7	Light Golden Blonde / Med. Bronze Blonde			•	•	•	•		•		•	•	•	•					
	Platinum																	•	
Ombré		2NA/5G		•	•														
		2NA/7V		•	•														
		3N/4RG		•	•														
		4N/8YG		•	•														
		5G/7BRZ		•	•														
		6NG/9V		•	•														



# ULTRATRESS HAIR CARE

After years of research in top salons around the world, UltraTress developed a hair care line exclusively formulated for UltraTress Human Hair Extensions. Designed as a four-step system, these products can be used on color-treated hair, fine hair, or oily scalp and are formulated to keep UltraTress Human Hair Extensions in longer.

## BALANCING SHAMPOO

A gentle shampoo that cleanses away organic oils and adds moisture and body to your UltraTress Hair Extensions, improving elasticity and strength, leaving hair more manageable. Specially formulated to keep UltraTress Human Hair Extensions in for a longer period of time.

## CONDITIONER [DO NOT USE ON HAIR BEFORE APPLICATION.]

Promotes body and shine, smoothes hair, reduces static and prevents dryness along with getting flyaway strands back in shape. Can also be used daily as a detangler that's safe to the adhesive bond.

## LEAVE-IN CONDITIONER SPRAY

Nourishes and protects UltraTress Hair Extensions from the wear and tear of daily styling. It leaves hair smooth, without build up and gives hair a healthier look from root to end. Contains sunscreen that helps protect against color loss, and damage from harmful UV rays. Provides instant detangling for any hair type.

## FINISHING MIST SPRAY

Provides a clean, flexible all day hold that secures the hair strands with a natural touchable finish. Easy to brush through formula reactivates with water for easy restyling. Creates a barrier between hair and damaging UV rays.

UltraTress hair care products can be purchased individually or as part of a Home Care Kit.



UltraTress<sup>®</sup>  
Ultimate hair extensions, ultimate you.





# Simplicity™

HAIR EXTENSIONS BY ULTRATRESS

Protected under U.S. Patent no. 7,533,676  
European Patent no. 1 759 604 B1  
Other Patents Pending

For more information or to order  
Simplicity Hair Extensions call:

**800-327-5555**  
**SimplicityHair.com**





## Gorgeous hair in less than an hour.

Simplicity Hair Extensions are so unique, they are a patented, ground breaking new application system of hair extensions. Simplicity Hair Extensions are simple, safe and fast! What once took hours to achieve can now be done in less than an hour!

Simplicity Hair Extensions are made of the highest

quality, 100% **Remi Human Hair** that have been ventilated (hand-tied) into a polyurethane surface. This patented technology makes for a truly simple application like no other on the market. Simplicity Hair Extensions and Grafts are available in a variety of **chemical-free** lowlights and highlights. It has never been easier to

produce length and volume.

As a salon professional, you know that the more time you have, the more clients you are able to service. Let Simplicity Hair Extensions provide your clients with **comfortable, versatile extensions** and you with a time-saving service unlike any other extension brand out there!



[www.SimplicityHair.com](http://www.SimplicityHair.com) • 800-327-5555

**FACEBOOK:** @SimplicityHairExtensions • **TWITTER:** @SimplicityExten

Simplicity is a brand of Hair Visions International



# EXTENSIONS

100% REMI HUMAN HAIR

## AVAILABLE IN:

1½" AND 2" WIDTHS  
STRAIGHT OR WAVY

10-12" 14-16" 18-20" HAIR LENGTHS  
12 EXTENSIONS PER PACK

SEE PAGE 3 FOR AVAILABLE COLORS.



# GRAFTS

100% REMI HUMAN HAIR

## AVAILABLE IN:

1½" WIDTH

8-10" HAIR LENGTH

12 GRAFTS PER PACK

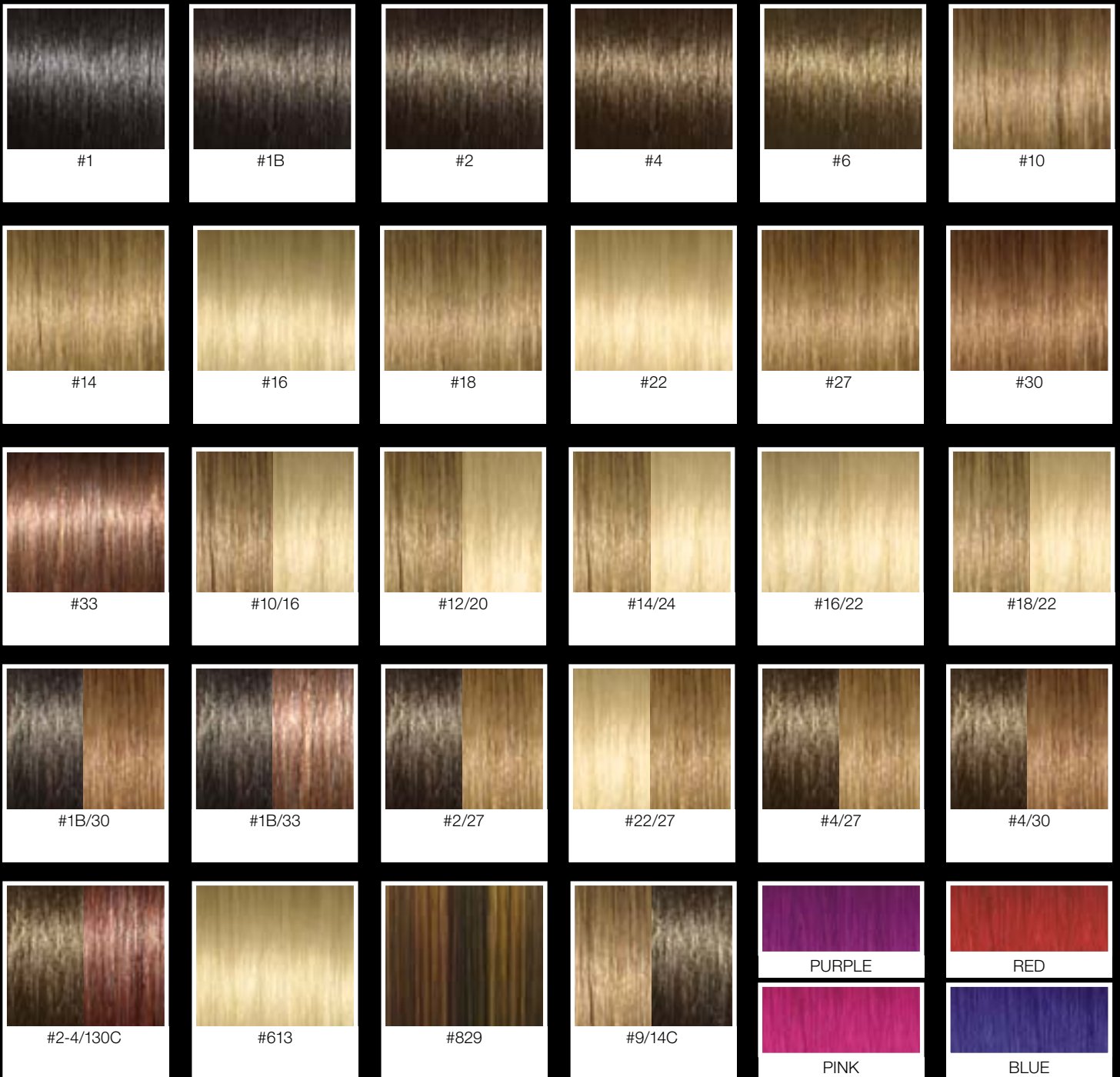
SEE PAGE 3 FOR AVAILABLE COLORS.

Simplicity Grafts are designed for bangs, top-of-head & crown.

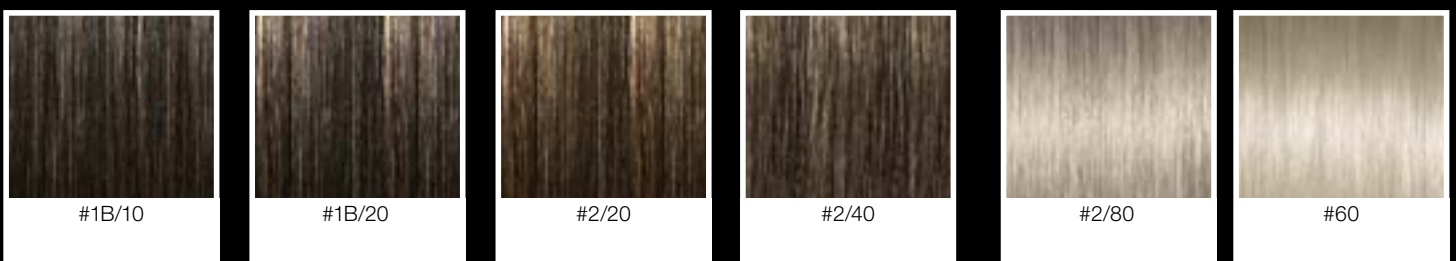




# AVAILABLE COLORS



GREY SHADES AVAILABLE IN GRAFTS ONLY



# Home Care Kit

## BALANCING SHAMPOO

A gentle shampoo that cleanses away organic oils and adds moisture and body to your Simplicity Hair Extensions, improving elasticity and strength, leaving hair more manageable. Specially formulated to keep Simplicity Human Hair Extensions in for a longer period of time.

## CONDITIONER [DO NOT USE ON HAIR BEFORE APPLICATION.]

Promotes body and shine, smoothes hair, reduces static and prevents dryness along with getting flyaway strands back in shape. Can also be used daily as a detangler that's safe to the adhesive bond.

## LEAVE-IN CONDITIONER SPRAY

Nourishes and protects Simplicity Hair Extensions from the wear and tear of daily styling. It leaves hair smooth, without build up and gives hair a healthier look from root to end. Contains sunscreen that helps protect against color loss, and damage from harmful UV rays. Provides instant detangling for any hair type.

## FINISHING MIST SPRAY

Provides a clean, flexible all day hold that secures the hair strands with a natural touchable finish. Easy to brush through formula reactivates with water for easy restyling. Creates a barrier between hair and damaging UV rays.

## ARGAN OIL

Extracted from the seed of the Argan tree, this herb is renowned for being rich in Omega 3 and Omega 9 fatty acids to make it an ideal conditioning agent.



## Simplicity Certification Kit includes:

- Simplicity Extensions
- Simplicity Grafts
- Simplicity Pressing Tool
- Simplicity Mannequin Head
- Simplicity Re-Tape Poly Strips
- Simplicity Instruction Manual
- Simplicity Color Ring
- Simplicity Fashion Show DVD
- Simplicity Remover 4 oz.
- Simplicity Clarifying Shampoo
- Simplicity Liquid Adhesive



For online certification and videos: [www.SimplicityHair.com](http://www.SimplicityHair.com)

## Certification Subjects:

(See Instruction Manual and Video)

- Pre-application procedure
- Extension placement plan
- Simplicity Extension application process
- Simplicity Grafts application process
- Blending and styling
- Consultation with your client
- Removal and reapplication process
- Hair care instructions





Simplicity™  
HAIR EXTENSIONS | BY ULTRATRESS





Simplicity™  
HAIR EXTENSIONS | BY ULTRATRESS