

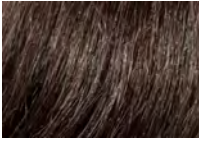


CLUB WOMEN W[®]
WOMEN'S CATALOG

NOW AVAILABLE WITH THE MOST COMPLETE COLOR RING ON THE MARKET

A UNIQUE SELECTION OF 29 ARTISANALLY CRAFTED COLORS

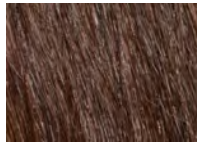
BLACK



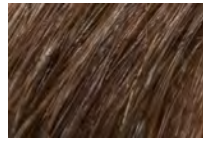
DARK BROWN



MEDIUM BROWN



LIGHT BROWN



CHOCOLATE
BROWN



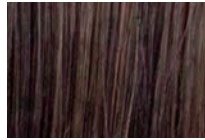
SANDY
BLOND



CARAMEL
MACHIATTO



COLD
BREW



HONEY
BROWN



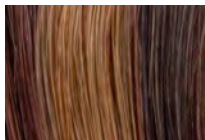
BUTTER
SCOTCH



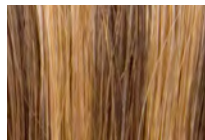
*VANILLA
CREAM



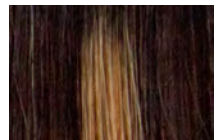
CHOCOLATE
ALMOND FUDGE



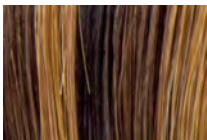
CARAMEL
BROWN



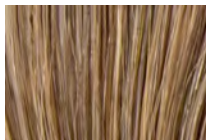
DARK
CHOCOLATE



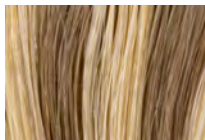
MOCA
EXPRESSO



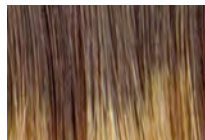
GOLDEN
BROWN



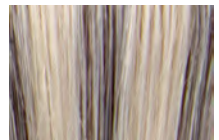
HAZELNUT



CHESTNUT
BLOND



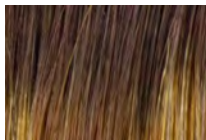
*SMOKEY



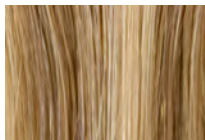
*PLATINUM



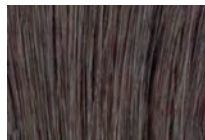
CINNAMON
TOAST



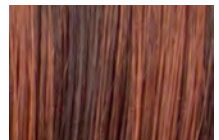
MACADAMIA
NUT



EBONY



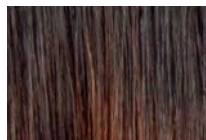
RED
VIOLET



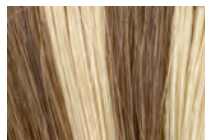
*ANTHRACITE



CHERRY
COKE



IRISH
CREAM



RIPE
PEACH



CHAMPAGNE



Colors marked with a * are a mix of Remy Human Hair & High-Heat Synthetic Fiber



**NEW
DESIGN
MODELS**

ALEXIA PLUS LWALEXIAPL

BASE:

- Injection top
- Similar to Alexia design, except skin top where hair is injected
- 3 non-slip strips

HAIR:

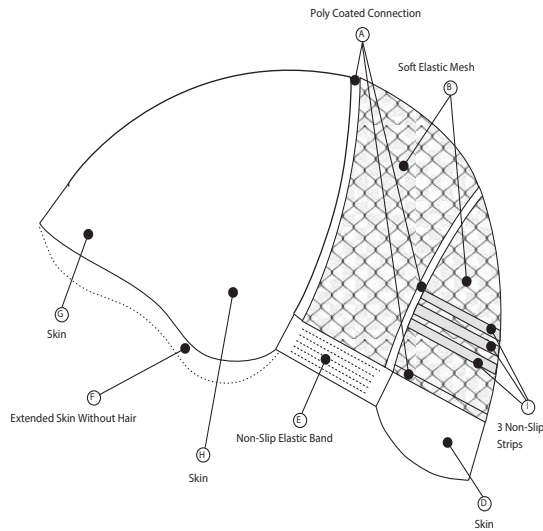
- Type: Human hair, gray is synthetic
- Length: 16"
- Wave Pattern: Straight
- Density: Medium, minus 5% in the front

SIZE:

- 21"

MAINTENANCE:

- Minimum 3-4 hair solutions per year



NEW
DESIGN

ALEXIA PREMIER LWALEXIAPR

BASE:

- V-loop in front
- 3 non-slip strips
- Similar to Alexia design, however, skin top v-loops in the front, knotted for the rest

HAIR:

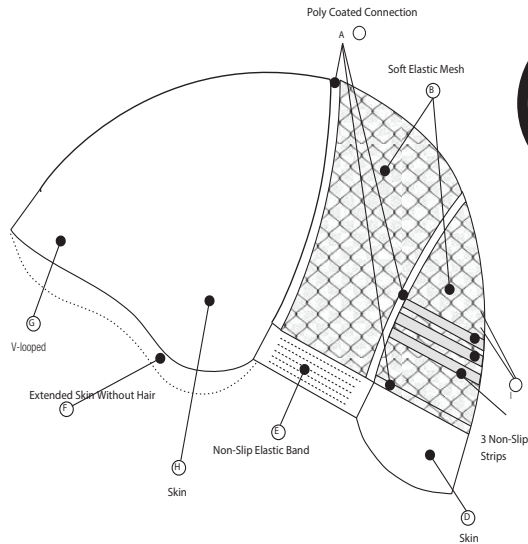
- Type: Human hair, gray is synthetic
- Length: 16"
- Wave Pattern: Straight
- Density: Medium, minus 5% in the front

SIZE:

- 21"

MAINTENANCE:

- Minimum 4-5 hair solutions per year



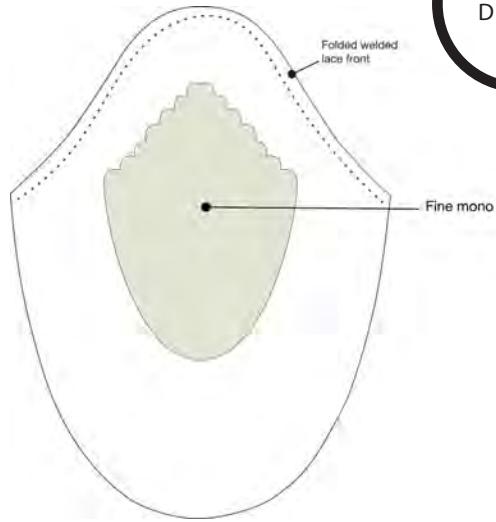
NEW
DESIGN

CELINE CUTAWAY LWCELINECUT



BASE:

- Folded welded lace front
- Fine mono center
- 1" pu coating in front blending to 3" in back



HAIR:

- Type: 100% Remy Human Hair, grey is synthetic
- Length: 14"
- Wave Pattern: light wave
- Density: Light density + 10% in front, light to medium throughout

SIZE:

- 8 3/4" x 10 3/4"
- Can be cut down

MAINTENANCE:

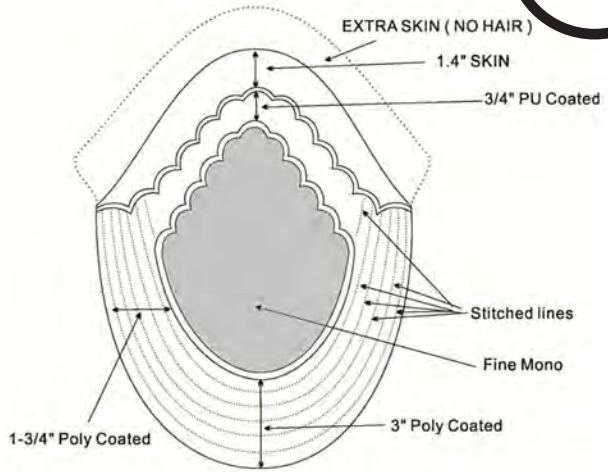
- Minimum 2-3 units per year

CELINE EPIC LWCELINEP



BASE:

- Extra skin without hair
- Fine mono center
- 3/4" pu coating in front blending to 1-3/4" on the sides and 3" on the back
- Stitched cutaway lines



HAIR:

- Type: 100% Remy Human Hair, grey is synthetic
- Length: 14"
- Wave Pattern: light wave
- Density: Medium throughout

SIZE:

- 9.5" x 11"
- Can be cut down

MAINTENANCE:

- Minimum 2-3 units per year

CELINE 2 LWCELINEII



BASE:

- Extended fine welded lace front without hair
- 3/4" fine welded lace front
- Fine mono center
- 1" pu coating in front blending to 3" in back all around
- Stitched cutaway lines

HAIR:

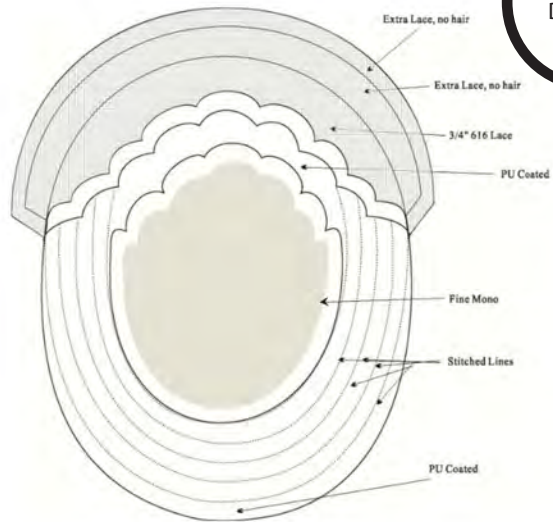
- Type: 100% Remy Human Hair, grey is synthetic
- Length: 14"
- Wave Pattern: Light wave
- Density: Medium throughout

SIZE:

- 8" x 10 3/4"
- Can be cut down

MAINTENANCE:

- Minimum 2-3 units per year



PARAGON 1 FOR LADIES LW6211+



BASE:

- Fine welded lace base
- Extended welded lace all the way around without hair

HAIR:

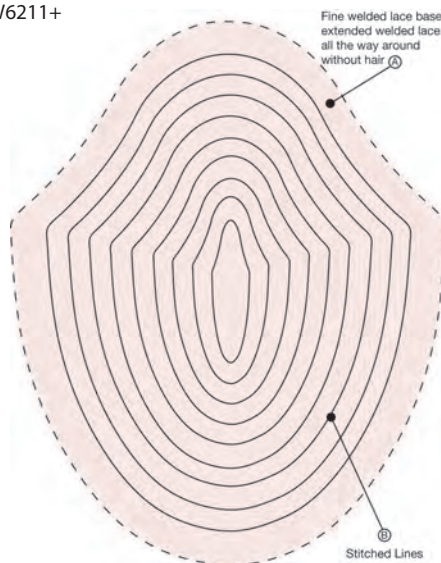
- Type: 100% Remy Human Hair
- Length: 14"
- Wave Pattern: Light wave
- Density: Medium throughout
- Style: Freestyle

SIZE:

- 9 1/2" x 11"
- Can be cut down

MAINTENANCE:

- Minimum 2-3 units per year



PARAGON EPIC LWPARAE



BASE:

- Fine welded lace base
- 1-3/4" skin on each side blending to 3" in the back
- 1/4" scalloped connection

HAIR:

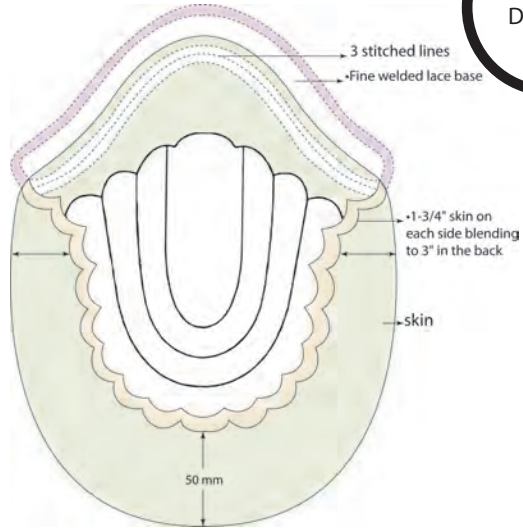
- Type: 100% Remy Human Hair
- Length: 14"
- Wave Pattern: Light wave
- Density: Medium throughout
- Style: Freestyle

SIZE:

- 9 1/2" x 11"
- Can be cut down

MAINTENANCE:

- Minimum 2-3 units per year



POLYGRAFT FULL CAP FOR LADIES LWPOLYFC-



BASE:

- Transdermal breathable skin base
- Non-slip elastic band
- 3 non-slip strips

HAIR:

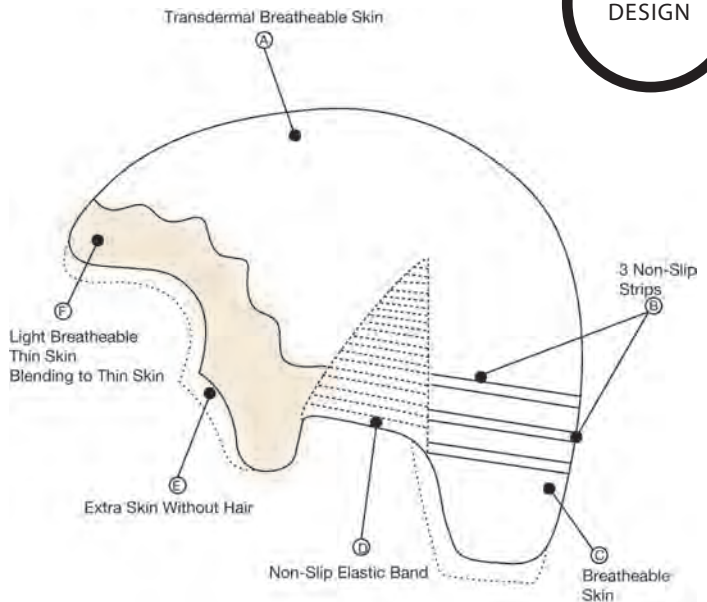
- Type: 100% Remy Human Hair, gray is synthetic
- Length: 14-16"
- Wave Pattern: Light wave
- Density: Light to medium in front, medium throughout
- Style: Freestyle

SIZE:

- 21 1/2 circumference
- Can be cut down to any size

MAINTENANCE:

- Minimum 2-3 units per year



EUROPEAN HAIR

FRENCH INJECTION TOP & DOUBLE DRAWN HAIR

PARIS* LWPARIS

BASE:

- French injection top
- Double drawn hair
- French lace & silk base
- 1/4" folded edge
- Includes 4 comb clips

HAIR:

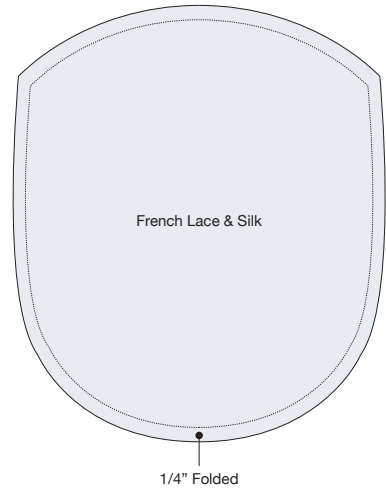
- Type: Euro human hair, gray is synthetic
- Length: 16"
- Wave Pattern: Straight
- Density: Medium to light throughout
- Style: Freestyle

SIZE:

- 4" x 5"

MAINTENANCE:

- Minimum 3-4 hair solutions per year



PARIS II LWPARISII

BASE:

- French injection top
- Double drawn hair
- French lace & silk base
- 1/4" folded edge
- Includes 4 comb clips

HAIR:

- Type: Euro human hair, gray is synthetic
- Length: 16"
- Wave Pattern: Straight
- Density: Medium to light throughout
- Style: Freestyle

SIZE:

- 5" X 7"

MAINTENANCE:

- Minimum 3-4 hair solutions per year





ISABELLA LWEHFC

BASE:

- Skin front with scalloped #5 poly coated connection
- Skin back that can be cut down
- Non-slip Flex-Form strap adjusts automatically for comfortable, custom fit.
- Stretchable netting in the back

HAIR:

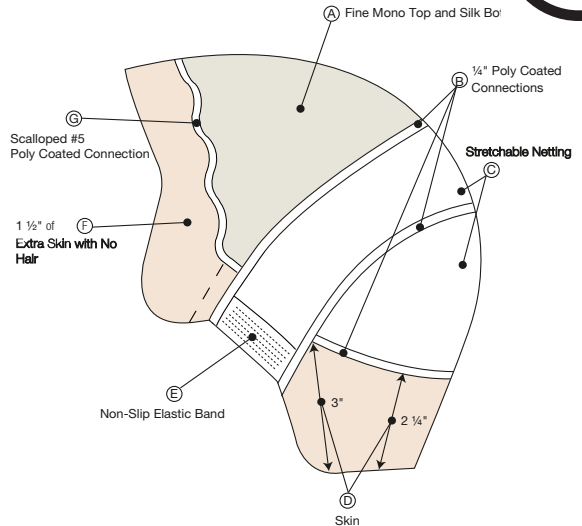
- Type: European human hair, gray is synthetic
- Length: 14"
- Wave Pattern: Light wave
- Density: Medium throughout
- Style: Freestyle

SIZE:

- 21"

MAINTENANCE:

- Minimum 2-3 hair solutions per year



VICTORIA LWEHTOH

BASE:

- 1 1/2" extended skin without hair in the front
- French Injection Top
- Silk bottom layer
- Poly coated perimeter

HAIR:

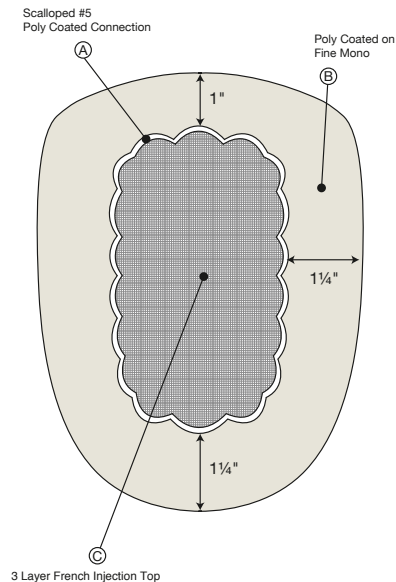
- Type: European human hair, gray is synthetic
- Length: 15"
- Wave Pattern: Slight wave
- Density: Medium plus
- Style: Freestyle

SIZE:

- 5" x 7"

MAINTENANCE:

- Minimum 3-4 hair solutions per year



**REMY
HAIR**

FRENCH INJECTION TOP

CANNES LWCANNES

BASE:

- French injection top
- Stretchable netting for rest
- Metal stay

HAIR:

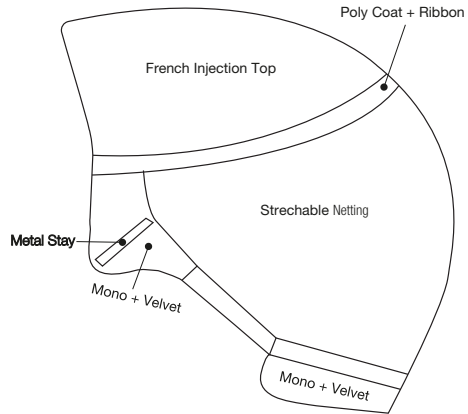
- Type: Remy human hair, gray is synthetic
- Length: 7" - 12"
 - 12" at apex
 - 6.5" at nape
- Wave Pattern: Straight
- Density: Medium to light throughout
- Style: Left part

SIZE:

- 21"

MAINTENANCE:

- Minimum 2-3 hair solutions per year



MONACO LWMONACO

BASE:

- French injection top
- Stretchable netting for rest
- Metal stay

HAIR:

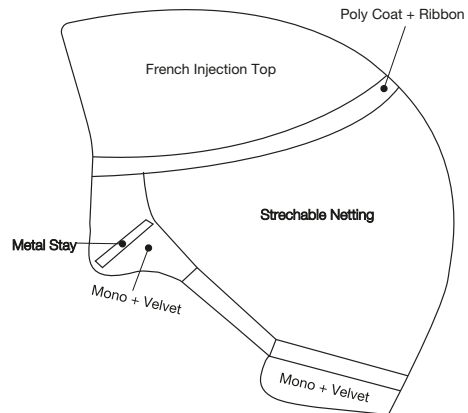
- Type: Remy human hair, gray is synthetic
- Length: 12"
 - 12" at apex
 - 12" at nape
- Wave Pattern: Straight
- Density: Medium to light throughout
- Style: Right part

SIZE:

- 21"

MAINTENANCE:

- Minimum 2-3 hair solutions per year



KRISTEN LWKKRISTEN

BASE:

- French lace front
- Double layer French lace top
- Stretchable netting for rest
- Non-slip Flex-Form strap adjusts automatically for comfortable, custom fit
- Metal stays in temple and nape of neck
- Stretchable netting in crown and back
- Skin in the nape of the neck

HAIR:

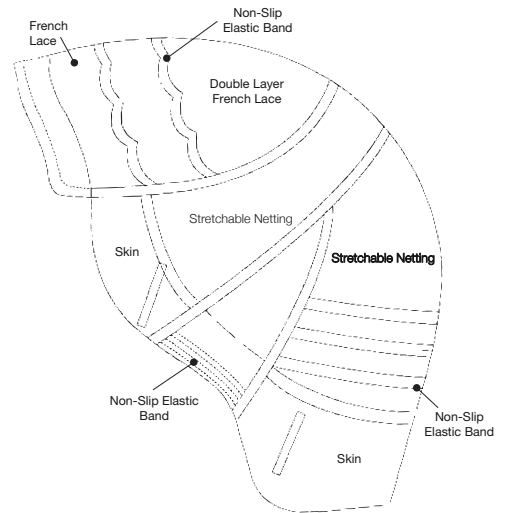
- Type – Remy human hair, gray is synthetic
- Length – 10"
- Wave Pattern – Straight
- Density – Medium to light throughout
- Style – Freestyle

SIZE:

- 21 1/4"

MAINTENANCE:

- Minimum 3-4 hair solutions per year



SHANIA LWSHANIA

BASE:

- All thin skin base
- 1/4" thin extended skin front without hair
- 1 1/2" stretchable soft netting from ear to ear extending just below crown (including poly coat connections)
- Extended thin skin in nape
- 2" thin skin v-looped

HAIR:

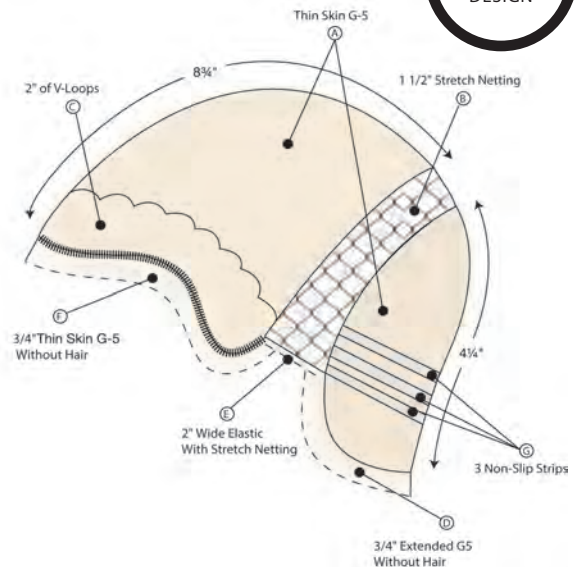
- Type – Remy human hair, gray is synthetic
- Length – 15" - 16"
- Wave Pattern – Straight
- Density – Light to medium throughout
- Style – Freestyle

SIZE:

- 21 1/4"
- Can be cut down to any size

MAINTENANCE:

- Minimum 4-6 hair solutions per year



ALEXIA

LWALEXIA8, LWALEXIA16,
LWALEXIA56, CWALEXIA17, CWALEXIA19

BASE:

- Non-slip Flex-Form straps adjust automatically for comfortable, custom fit
- Fine mono top
- Soft elastic mesh
- 1/4" Poly coated connection

HAIR:

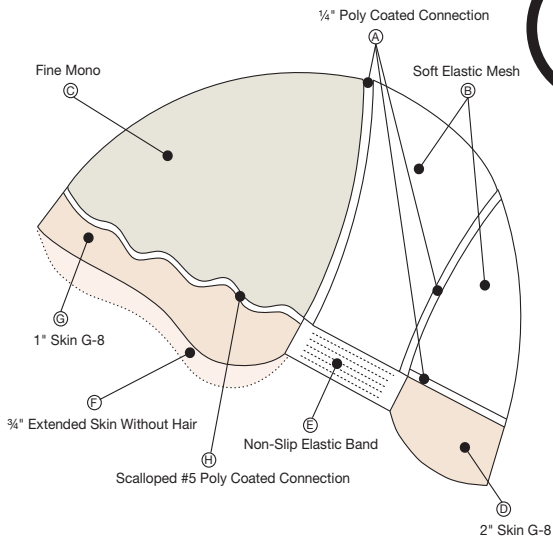
- Type: Remy human hair, gray is synthetic
- Length: 8", 10", or 16" (REFER TO SIZE SECTION)
- Wave Pattern: Straight
- Density: Light/medium throughout
- Style: Freestyle

SIZE:

- Available in 4 Sizes
 - 17" AVAILABLE IN SOLID COLORS & LENGTH 10" ONLY
 - 19" AVAILABLE IN SOLID COLORS & IN LENGTHS 11-12" ONLY
 - 21" AVAILABLE IN LENGTHS 8" AND 16" ONLY
 - 22"- AVAILABLE IN LENGTH 16" ONLY

MAINTENANCE:

- Minimum 3-4 hair solutions per year



KATE

LWRHFC2

BASE:

- Fine mono top
- French lace front
- Stretchable netting for rest
- Skin in nape of neck

HAIR:

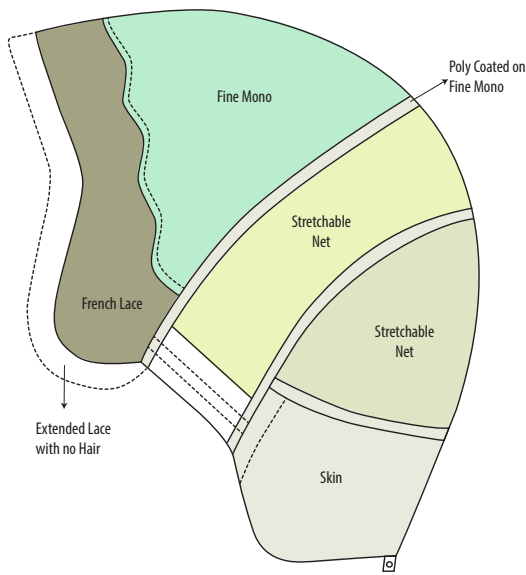
- Type: Remy human hair, gray is synthetic
- Length: 12" - 14"
- Wave Pattern: Straight
- Density: Medium throughout
- Style: Freestyle

SIZE:

- 21"

MAINTENANCE:

- Minimum 4-6 hair solutions per year



CATHY LWRHTOH



BASE:

- Fine mono base
- Folded French lace

HAIR:

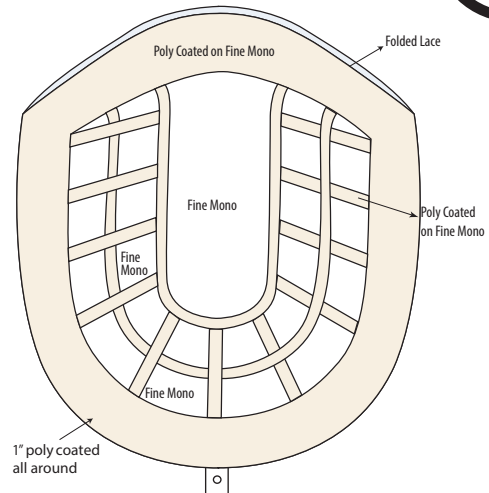
- Type: Remy human hair, gray is synthetic
- Length: 13"
- Wave Pattern: Straight wave
- Density: Medium throughout
- Style: Freestyle

SIZE:

- 7" x 7 3/4"
- Several cut down options & integration options

MAINTENANCE:

- Minimum 3-4 hair solutions per year



CELINE LWCELINE



BASE:

- Fine mono base
- 1" poly coated cutaway front hairline
- 1 1/2" poly coated edge blending to 3" in back
- Stitched, cut-away lines

HAIR:

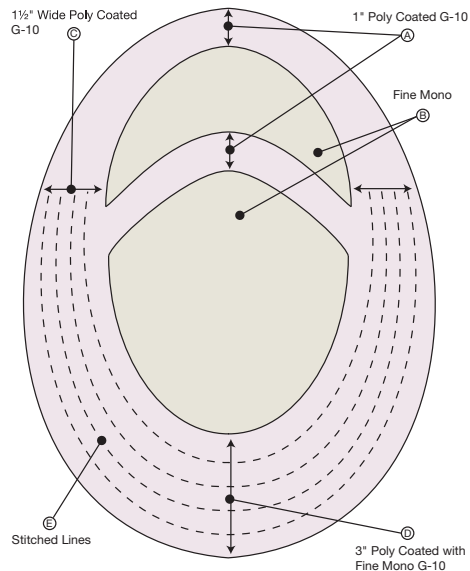
- Type: Remy human hair, gray is synthetic
- Length: 14"
- Wave Pattern: Light wave
- Density: Medium throughout
- Style: Freestyle

SIZE:

- 7" x 9"
- Several cut down options

MAINTENANCE:

- Minimum 2-3 hair solutions per year



LADIES ICON LWICON

BASE:

- Icon Mesh Material: The finest and thinnest lace available—exclusive to New Image

HAIR:

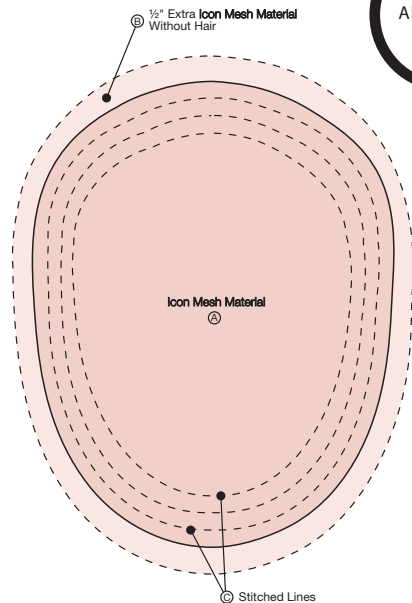
- Type: Remy human hair, gray is synthetic
- Length: 12"
- Wave Pattern: Light wave
- Density: Medium, less 5% throughout
- Style: Freestyle

SIZE:

- 6" x 8"
- Can be cut down

MAINTENANCE:

- Minimum 6-8 hair solutions per year



ICON 6L* LWLM2000

BASE:

- Icon Mesh Material: The finest and thinnest lace available—exclusive to New Image
- Extended 1/2" Icon Mesh Material in front without hair
- 1" thin skin on sides, 2" thin skin in back

HAIR:

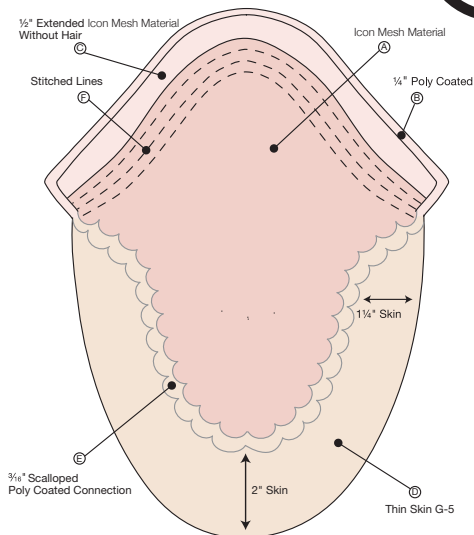
- Type: Remy human hair, gray is synthetic
- Length: 12"
- Wave Pattern: Light wave
- Density: Medium, less 5% throughout
- Style: Freestyle

SIZE:

- 8" x 10"
- Can be cut down

MAINTENANCE:

- Minimum 6-8 hair solutions per year



LADIES POLYGRAFT II LWPOLYII



BASE:

- All thin skin base
- Breathable holes in center
- Extended skin without hair

HAIR:

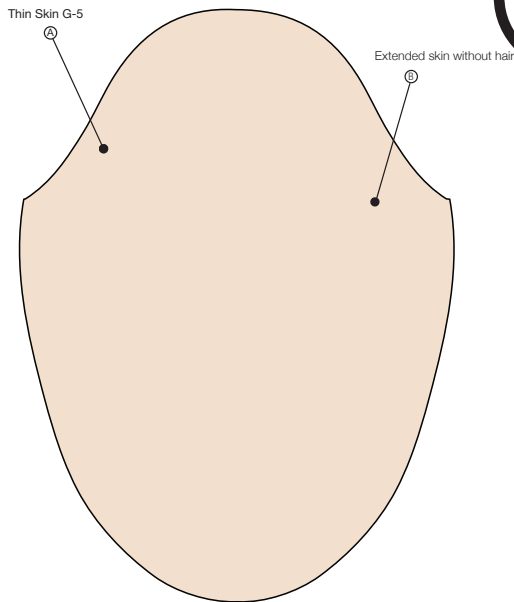
- Type: Remy human hair, gray is synthetic
- Length: 12"
- Wave Pattern: Light wave
- Density: Medium, less 5% throughout
- Style: Freestyle

SIZE:

- 8" x 10"
- Can be cut down

MAINTENANCE:

- Minimum 3-4 hair solutions per year



LADIES QUANTUM VI LWQ6



BASE:

- French lace base with extended French lace front
- 1" thin skin on sides, 1 1/2" thin skin back
- Stitched contour lines

HAIR:

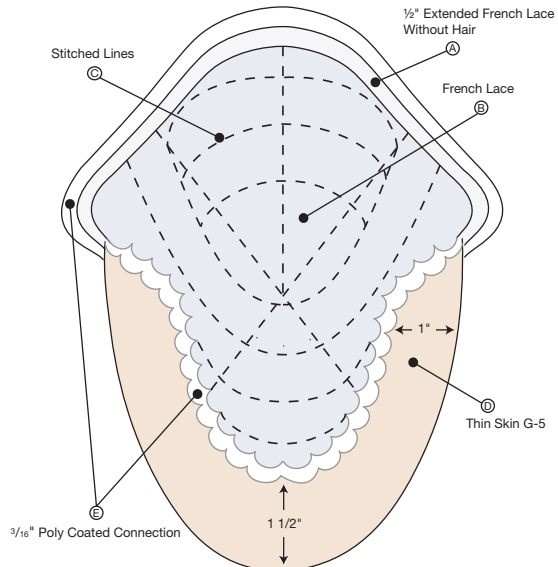
- Type: Remy human hair, gray is synthetic
- Length: 12"
- Wave Pattern: Light wave
- Density: Light/medium throughout
- Style: Freestyle

SIZE:

- 6" x 7"
- Can be cut down

MAINTENANCE:

- Minimum 6-8 hair solutions per year



VERA LWVERA

BASE:

- Fine mono with 3/4" poly coated perimeter
- Includes 4 comb clips

HAIR:

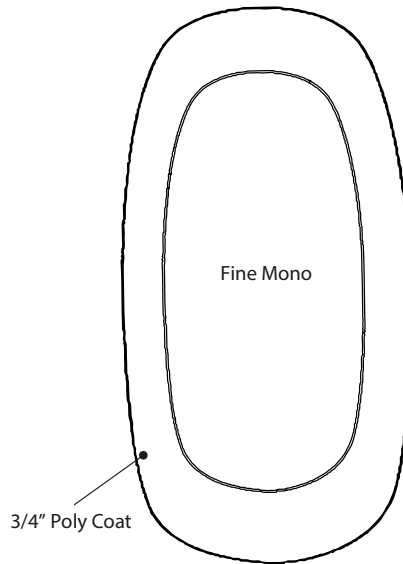
- Type: Remy human hair, gray is synthetic
- Length: 13"
- Wave Pattern: Straight
- Density: Light to medium throughout
- Style: Center part

SIZE:

- 2 1/2" x 5 1/2"

MAINTENANCE:

- Minimum 2-3 hair solutions per year



VINTAGE LWVINTAGE

BASE:

- Fine mono with 1" poly coated perimeter
- Includes 4 comb clips

HAIR:

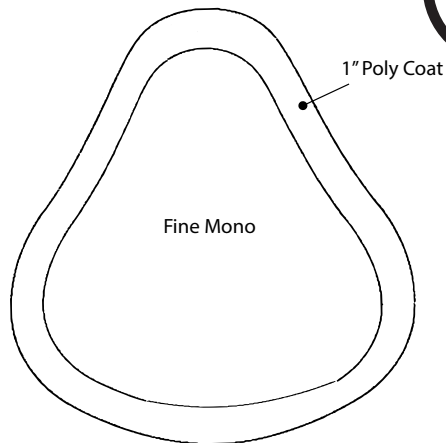
- Type: Remy human hair, gray is synthetic
- Length: 13"
- Wave Pattern: Straight
- Density: Medium to light throughout
- Style: Center part

SIZE:

- 5" x 6"

MAINTENANCE:

- Minimum 2-3 hair solutions per year



VOGUE

LWVOGUE



BASE:

- 1 1/2" fine mono with 3/4" poly coat perimeter
- Includes 5 comb clips

HAIR:

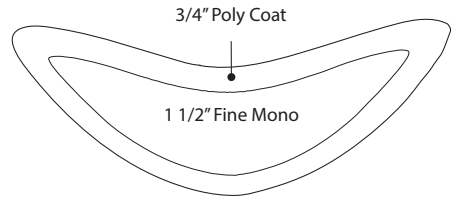
- Type: Remy human hair, gray is synthetic
- Length: 11" - 13"
- Wave Pattern: Straight
- Density: Light to medium throughout
- Style: Freestyle

SIZE:

- 6 1/2" x 2 1/4"

MAINTENANCE:

- Minimum 2-3 hair solutions per year



VOLTAGE

LWVOLTAGE



BASE:

- Fine mono with 3/4" poly coated perimeter
- Includes 4 comb clips

HAIR:

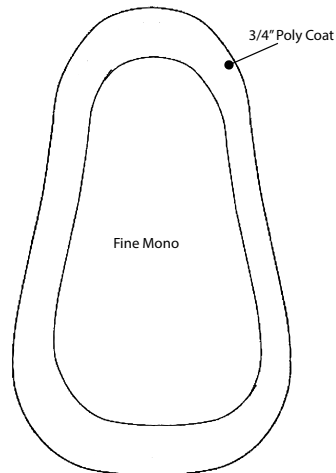
- Type: Remy human hair, gray is synthetic
- Length: 10"
- Wave Pattern: Straight
- Density: Light to medium throughout
- Style: Center part

SIZE:

- 2 1/2" x 5"

MAINTENANCE:

- Minimum 2-3 hair solutions per year



READY

TO

WEAR

AMERICA LWAMERICA

HAIR:

- Type: Human hair, gray is synthetic
- Length: 5" - 7"
 - 5" - 7" layered fringe
 - 7" at apex
 - 6" at nape
- Wave Pattern: Straight
- Density: Light to medium throughout
- Style: Center part

SIZE:

- 21"

MAINTENANCE:

- Minimum 2-3 hair solutions per year



NEW
PRE-STYLED
DESIGN

DEBUT LWDEBUT

HAIR:

- Type: Human hair, gray is synthetic
- Length: 3" - 7"
 - 7" at apex
 - 3" at nape
- Wave Pattern: Straight
- Density: Light to medium throughout
- Style: Left part

SIZE:

- 21"

MAINTENANCE:

- Minimum 2-3 hair solutions per year



NEW
PRE-STYLED
DESIGN

ELLE LWELLE

HAIR:

- Type: Human hair, gray is synthetic
- Super fine welded lace front
- Length: 6" - 14"
 - 14" at apex
 - 6" at nape
- Wave Pattern: Straight
- Density: Light to medium throughout
- Style: Center part

SIZE:

- 21"

MAINTENANCE:

- Minimum 2-3 hair solutions per year



EUPHORIA LWEUPHORIA

HAIR:

- Type: Human hair, gray is synthetic
- Super fine welded lace front
- Length: 12" - 16"
 - 16" at apex
 - 12" at nape
- Wave Pattern: Straight
- Density: Light to medium throughout
- Style: Center part

SIZE:

- 21"

MAINTENANCE:

- Minimum 2-3 hair solutions per year



HK LWHK

HAIR:

- Type: Human hair, gray is synthetic
- Length: 3" - 14"
 - 3" - 6" layered fringe
 - 14" at apex
 - 13" at nape
- Wave Pattern: Straight
- Density: Light to medium throughout
- Style: Center part with fringe

SIZE:

- 21"

MAINTENANCE:

- Minimum 2-3 hair solutions per year



NEW
PRE-STYLED
DESIGN



**SKIN
WEFT**

CLUB W SKIN TAPE-IN EXTENSION_{LWHK}

HAIR:

- Type: 100% handmade, allowing you to have a very flat finish
- Hair Length: 20" - 22"
- Skin: 1/2"
- Skin Weft Width: 32"





NEWIMAGE

WWW.NEWIMAGELABS.COM

1501 Northpoint Parkway, Suite 100, West Palm Beach, FL 33407
Toll Free 1-800-359-4247 | Local 1-561-697-9494 | Fax 1-561-697-4944

Follow us! @newimagelabs



April 2023[©]